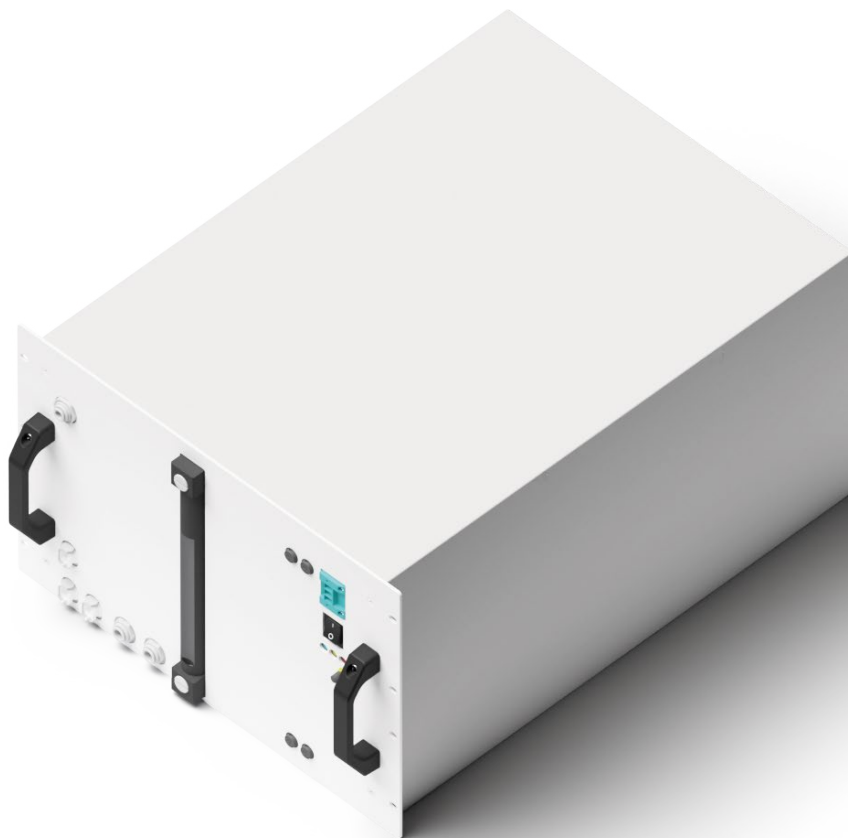


Water Tank

WT 2.1



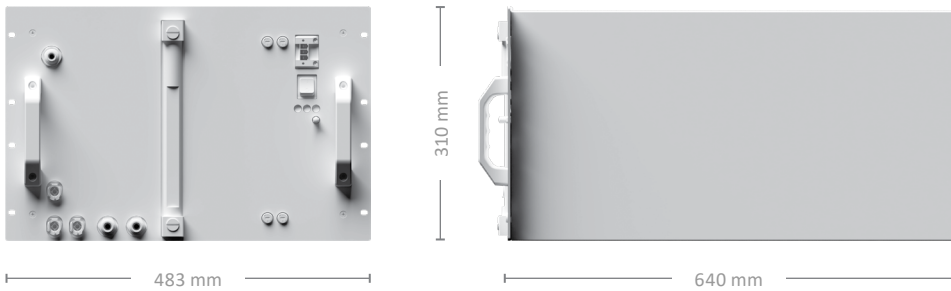
Enapter's Water Tank provides storage for 38 litres of clean water for the AEM electrolyser. The water tank is rack mountable into a standard 19" cabinet. The tank contains a conductivity sensor and a pump system to supply up to 11 AEM electrolysers with clean water.



Water Tank WT 2.1
www.enapter.com/wt21

Specifications

Enapter
Water Tank WT 2.1



Capacity	38.5 L
Output pressure	Up to 2.75 barg
Maximum power consumption	35 W
Stand-by power consumption	3 W
Standard power supply	AC 110 – 240 V, 50/60 Hz
Ambient operative temperature range	5 °C – 45 °C
Ambient operative humidity range	20 – 95% Rh
IP Rating	IP 20
Control and monitoring	Fully automatic with Enapter's EMS
Maximum water input conductivity	< 5 µS/cm (at 25 °C)
Water input pressure requirement	0 – 6 barg
Max outlet water flow rate	3.8 L/min
Water inlet flow requirement	> 0.28 L/min
Module weight (without water)	23 kg
Module weight (with water)	62 kg
Dimensions	W: 482 mm × D: 643 mm × H: 310 mm
Space inside cabinet	7 U
Maintenance	If in use, the water tank is maintenance-free. After any period without use exceeding 1 month, the tank must be drained and washed before continuing usage.
Recommended number of AEM electrolyzers to be supplied	Up to 11



Water Tank WT 2.1
www.enapter.com/wt21